

**Princess
Charlotte
exhibition**
PAGE 4



**The Open Market
gets a temporary
home**

PAGE 3

**Say 'I Do' in
Brighton**

A very popular
Wedding destination

PAGE 4

Market Trends



David Maslen
Maslen Estate Agents

The property market is set to continue on the steady path we saw established in 2011. There were 860,000 reported property transactions last year in the UK and experts are predicting a similar level this year.

The overall economy is still facing tough times, with any significant growth unlikely. The optimistic view is that it should remain reasonably static, which we hope will protect against the property market contracting. So, with the market remaining stable, house prices are too. There may be some growth with a small increase in prices, so we fairly confident that property values won't drop.

The trick to getting the most for your property is, as ever, sensible pricing. It's not a question of being the cheapest but offering good value in comparison to your neighbours and other properties in the area. Ensure your agent has strong local knowledge to ensure the valuation reflects a true picture of what you can achieve on your sale and it isn't inflated just to secure your custom, with pressure applied later to drop the price.

Brighton & Hove is generally cosseted against major house prices drops due to its popularity. Situated between the sea and the Sussex Downs there are very few areas available for development, so that will always put pressure on the existing housing stock. People will always need to move with the changes life brings: Growing families, change of job and relocation.

If you are a first time buyer you would be well advised to move in the next few months, as the stamp duty holiday for first time buyers will come to an end on 24th March. (Sales must be completed to qualify, so the deadline for completion is actually 23rd March as the 24th is a Saturday). Under the current stamp duty holiday for first time buyers, you could save up to £2,500. Likewise, if you are looking to sell a property under £250,000 it's a good time to market while the tax break is still available. In the Chancellor's last budget review he specified that the stamp duty concession would not be extended, despite calls to do so.

Council says 'yes' to new hospital

Brighton & Hove City Council's planning committee has unanimously approved a £420m redevelopment of the Royal Sussex County Hospital in Brighton.



Main components of the scheme are a central block shaped like a letter 'W' rising to 12 storeys, plus a five-storey building to the west, mainly housing a new cancer centre.

The existing Thomas Kemp Tower will have a helicopter pad added. An unusual feature will be the dismantling and re-siting of a grade 2 listed hospital chapel.

The old main hospital buildings dating from 1826 will be demolished as they have become unsuitable for delivering modern medicine.



The development will bring £550,000 worth of public transport improvements plus a roof garden on the lower new building, open to patients and the public. The development will provide modern wards, expand the neurosciences centre and create a Major Trauma Centre for the region. There will be 100 additional beds, the Sussex Cancer Centre will be rebuilt and there will be an expansion of teaching facilities. It will provide the cutting edge health facilities that our city deserves.

Some 390 parking spaces will be available to patients and visitors. Currently limited parking on site is mostly taken up by staff, leaving a shortage.

New buildings will reach national 'excellent' environmental standards. The entire project will take around 10 years to complete. Work will be undertaken in phases to ensure continuity of service.

What's on!

Some local events scheduled during the next few months.

- Feb 11/ **Brighton Science Festival** - Various venues
- Mar 01 **Brighton Half Marathon** - Brighton Seafrost
- Mar 17/ **Chocolate Festival** - Part of the Brighton Food & Drink Festival - New Road
- Mar 18 **Chocolate Festival** - Part of the Brighton Food & Drink Festival - New Road
- Mar 26 **X Factor 2012 Live Tour** - Brighton Centre
- Mar 30' **Brighton & Hove Food & Drink Festival** - 'Spring Harvest' - Events across the City.
- Apr 09

Please note: It is advisable to check dates, times and venue before travelling as each event is planned well in advance.



GRAND HOTEL

Designed in Italian style by John Whichcord, the Grand Hotel was built in 1862-4, at a cost of about £100,000 on the site of the houses of Artillery Place. Its foundation stone was laid in December 1862 and built of York and Portland stone, 3.5 million bricks and wrought and cast iron.

When the hotel opened on 23 July 1864, it was then Brighton's tallest building. It cost 2/6 for a top floor room, and £1/10s for the first floor. A hot or cold bath cost a shilling extra, a fire in the bedroom another 1/6 and a hip bath or night light were sixpence each. In the dining room, a dozen oysters cost a shilling. The Grand boasted all 'mod cons' of the day: a billiard room, a ball room, a smoking room, a library and one of the first hydraulic lifts in the country. The Grand also boasted an ingenious vacuum cleaning system, which was silent so as not to disturb the guests. The hotel's many famous guests have included Napoleon 111, President Kennedy, the Duke of Windsor, Ronald Reagan, and the Russians Malenkov and Bulganin.

In November 1961 the hotel came under the threat of redevelopment by Brighton Council which decided to compulsorily purchase it as part of the Churchill Square project, but its demolition was prevented when the government listed it.

The Grand became the focus of international fame for all the wrong reasons on the morning of October 12 1984 when a 25-pound gelnite bomb planted by the Provisional Irish

Republican Army exploded in room 629 in an attempt to assassinate Margaret Thatcher and her cabinet, who were attending the Conservative Party conference in the adjacent Brighton Centre. The hotel's owners, De Vere Hotels, decided to rebuild and refurbish the whole building in its original style, at a cost of £10 million. The decorative details, the two wide bows topped by roof pavilions, and the intricate ironwork were all restored, and a new conservatory was added. The reconstructed hotel was formally reopened on August 28 1986 by Margaret Thatcher.

In 1988 the Grand became the first Brighton hotel to be awarded five stars for its facilities. In July 2006, the De Vere group was bought by the Alternative Hotel Group.

On February 16 2008, a fire in a sixth floor bedroom resulted in 400 guests and staff being evacuated to the nearby Hilton Metropole hotel. A few months later, the hotel announced redundancies and the closure of its swimming pool. A planned £25 million refurbishment programme was halted, which has meant the hotel, once one of Sussex's only five-star hotels, has no AA-rating.

Libraries to become personal finance oracle



Libraries in Brighton & Hove have won a place in a national pilot programme aimed at helping people to manage their finances on the internet.

The council's libraries will help develop a system for training staff which can be rolled out nationally. They will also identify the best online resources available.

The news came just a few weeks after the council won a national award from the Guardian newspaper for its Council Connect scheme which shows residents how to use the internet in libraries.

The Society of Chief Librarians (SCL) is working on eight pilot projects to help people effectively navigate the range of national information sources available online. These pilots began in October 2011, will complete by the end of March 2012 and involve more than 60 English library authorities.



Get active, healthy and fit in 2012

Need to some help with those New Year resolutions? If so, it's time to join Brighton & Hove's Get Active for 2012 campaign.

There's hundreds of activities available - everything from athletics and basketball to yoga and zumba! The campaign is being run by the council's 'Active for Life' team to help you get active in your local community.

New activities on offer this year include:

In Shape for Life - Weekly physical activity sessions for adults who want a fun relaxed fitness sessions followed by friendly healthy living advice.

Fit and Fun Families sessions - for parent and carers to get active with their children and play fun games. Leaflets are available in local libraries and community centres with information on local cost physical activity sessions in your local neighbourhoods.

Call the council's Active for Life team for further information on 01273 292729

Open Market gets a temporary home for redevelopment

The transformation of Brighton's historic Open Market started in January beginning with the relocation of market traders to a specially-built, temporary home in nearby Francis Street.

A variety of stallholders will trade from the new base between Ditchling Road and London Road. They will be selling a range of goods including flowers, eggs and bacon, pet food and supplies, haberdashery, fish, fruit, veg and groceries alongside the market café.

Work will then begin on the £18m major transformation of the old market - beginning with demolition.

The revitalised market - to be run as a community enterprise by market traders - will

provide 44 new permanent covered market stalls and 12 creative workshops for arts and crafts.

The regeneration of the market will be funded by enabling the development of 87 affordable homes. Major improvements to Francis Street will see it become an attractive shared space for cars, cyclists and pedestrians. It is expected the project will be completed in the summer of 2013.





Plans for The Level, which will see the skate park relocated to the grassed area north of the playground despite opposition

GO-AHEAD FOR PARK REVAMP

A £2.2 million revamp of a park has been given the go-ahead. Funding to improve The Level, in Brighton, has been granted by the Heritage Lottery.

The plans include a new café, a water fountain, a children's play area and a sensory garden, and work is due to take place during the winter months of 2012 and 2013. In recent years the park and skate park has become a magnet for antisocial behaviour. Councillor Pete West, cabinet member for environment, said: "The Level is a space that we should all be proud of and now, after many years of neglect, we'll finally be able to give local people the park they need and deserve. The new café will be a hub and attract people to the park in the evenings. We will deliver a great park for the city, one that will leave a lasting heritage and benefit for generations."

Other new additions to The Level will include semi-circular shelters, pergolas, new toilets, bridges, paved areas and lights. A full-time project manager and a part time activity officer to oversee the work will be hired in the new year, to be paid for with bid money. Landscape architects to design the park's new look will be appointed through a competitive tender process. The council says it wants residents to come together in a community forum to help shape The Level's development. Artwork is not covered by the funds and the council is appealing for groups to come forward to decorate the new space.

New Blue Badges designed to help tackle fraud

Residents in Brighton & Hove who are entitled to a Blue Badge for disabled parking can look forward to a new, more efficient scheme which came into effect in January.

The cost of a Blue Badge is likely to go up in April, but residents will not be asked to pay any more until then.

The new scheme is being introduced by the government to help tackle Blue Badge fraud. New badges will be made of a combination of PVC and PET instead of cardboard. They will be more robust and include a hologram, making them much harder to forge.

It will make it easier for the severely disabled people who rely on the Blue Badge scheme to find a parking space. The changes will improve customer service and speed up the time it takes to renew Blue Badges.

National estimates are that the cost of a Blue Badge will go up to £10. This will cover the cost of administration, production and postage. The badge will be valid for three years. It is proposed that Brighton & Hove City Council will charge £10 from April.

Applying for or renewing a badge might mean completing a different application form and involve providing different information so that the council can process your application more effectively.

Children air their groundbreaking science project

Pupils from Elm Grove Primary School have made a short film about a groundbreaking science project where they have monitored air quality.

'Testing the Air' is narrated by children and shows how they have been monitoring air quality both in the playground and outside the school. They've been helped by Brighton & Hove City Council, Imperial College London, Duvas Technologies and the Open Air Laboratories (OPAL) project.

The project has developed pupils' interest in science and increased their understanding about the effects of transport activities on local air quality. The air quality results displayed on a big screen inside the school have helped children learn about the environment and whether activities such as the school run affects air quality.

Elm Grove has been working with community scientists from Imperial and OPAL and pupils have been carrying out experiments with a portable unit that they can move around the playground to see how emissions travel.

The educational programme has included lessons on the impact of air pollution, the local significance of biodiversity and visits to the ReachOut laboratory at Imperial College London's South Kensington campus and the nearby Science Museum.

Traffic emissions around schools are a big issue in the city and these children have been able to see how it affects air quality in their space. It's been a valuable project which we hope will encourage a new generation of young people interested in protecting and improving the environment.

Dreams of Here

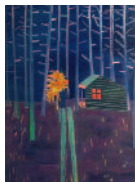
NEW WORK BY
Julian Bell, Tom Hammick and Andrzej Jackowski

Brighton Museum & Art Gallery
18 FEBRUARY TO 10 JUNE 2012.

Enjoy this beautiful exhibition of new work by three nationally recognised contemporary painters and printmakers, each with a strong connection to Sussex.

'Here' ranges from Sussex landscapes to interior spaces, and from vibrant colours to echoing empty rooms. Bell, Hammick and Jackowski all paint and draw figurative images, each with his own distinctive style.

Julian Bell brings the eye of the traditional realist painter, taking as his subject ordinary objects and everyday narratives. Accomplished colourist Tom Hammick creates brightly patterned paintings depicting modern-day life and Andrzej Jackowski draws the spectator to dream-like shadowy interior spaces. Each artist displays their work in one of Brighton Museum's three interconnected temporary exhibition galleries.



CABIN - TOM HAMMICK

My Favourite Toy

10 March to 6 November 2012
Hove Museum & Art Gallery

Free admission

Everyone has a favourite toy. They inspire our imaginations, our play, and help us as we grow. In later years, they hold cherished memories and make us nostalgic for times gone by. Whether it's a teddy, dolls house or a transforming car, this exhibition celebrates toys of all kinds, from across the eras.

On display are toys from Hove Museum's very own Wizard's Attic along with some popular favourites, and others that have not been loved for some time.

Children and young people from Brighton & Hove have helped create exciting displays of their own favourite toys, celebrating our shared affection for these familiar friends.



Did you know? Kemp Town Railway

The line was built between 1866 and 1869 by the London, Brighton and South Coast Railway Company principally to fend off a possible rival line into eastern Brighton.

Opened in August 1869, the single line track was just over 2.3 miles long, about twice the distance by road.

It attracted some 70,000 to 80,000 passengers annually. However, the services were permanently withdrawn in December 1932 having been badly affected by competition from buses.

After closure the line was used for goods traffic only and Kemp Town became the Brighton East goods-depot. In August 1971 the line was finally closed.

Despite its short length, the line was heavily engineered. The Lewes Road Viaduct, about 180 yards long, carried the track fifty feet above Lewes Road and Melbourne Street. It was demolished in April 1976 and the western arches were removed later in 1983.

Lewes Road Station opened on 1 September 1873 on a site behind the Rediffusion factory in D'Aubigny Road. There was a small station building and two platforms connected by a footbridge.

Kemp Town Station stood in the former Coalbrook Road. It was opened in 1869 and had four sidings and one platform. By 1880 it had been enlarged to include a large coal depot with seventeen sidings.

How to say 'I Do' in Brighton & Hove

Brighton & Hove City Council's Register Office is revamping appointment times to make the busy service easier to access.

The city is a popular wedding destination with venues attracting happy couples from near and far to tie the knot by the sea. In 2011, Brighton & Hove registrars conducted more than 1100 marriages and more than 200 civil partnerships.

At present, appointments for pre-ceremony meetings run from 9.30am to 4.30pm Monday to Friday. Many couples ask for a wider range of options to fit in with work and other commitments. The Register Office has responded with plans for additional premium appointments available earlier and later in the day, as well as weekend options when the ceremonies schedule allows.

Two types of pre-ceremony meeting - giving notice and ceremony planning - can be booked as a standard or premium appointment. Every couple is legally required to give notice of their intent to marry or enter into a civil partnership at least 15 days before their ceremony. The rise in ceremonies has increased demand for this essential part of the process.

The ceremony planning meeting is for anyone celebrating in a venue other than the Register Office. There are more than 40 licensed venues to choose from in the city, each with different styles and facilities. The couple will be invited to meet with a Registrar to talk through their big day.

Councillor Jason Kitcat, Cabinet member for finance and central services, said: 'We've listened to feedback from our customers and we have made changes as a result. The aim is to make all aspects of our civil ceremonies as straightforward and enjoyable as possible.'

To make an appointment to enter a notice of marriage or civil partnership and for enquiries about ceremonies, please call: (01273) 294421



Exhibition is free with Royal Pavilion admission fee. Adult £10, child (5-15 years) £5.70, concession £8. B&H resident (with proof of address) £5. Family tickets also available, see Royal Pavilion current admission charges. Prices correct from April 2012

Charlotte, the Forgotten Princess - a new exhibition at Brighton's Royal Pavilion

An exhibition devoted to the short life and tragic death of Princess Charlotte Augusta of Wales.

The only daughter of George, Prince of Wales (later George IV) and Princess Caroline of Brunswick, Charlotte was a feisty and headstrong child, who became very popular with the public, in stark contrast to her father.

Charlotte married in 1816, but then tragically died the following year shortly after giving birth, aged only 21. Her sudden death sent shockwaves across the country and the public outpouring of grief was exceeded in English history only by that following the death of Diana, Princess of Wales.

Referred to by contemporaries as the 'Daughter of England', Charlotte would have become queen had she outlived her father and grandfather – and Queen Victoria would probably not have succeeded to the throne.

For the first time in a generation, the Royal Pavilion & Museums' extensive collection of paintings, ceramics and drawings relating to the princess is on display, alongside dresses belonging to Charlotte and loans from museums and private collections.